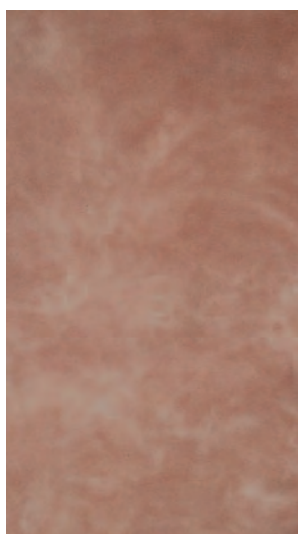




The Chemical Company

## BASF Wall Systems | AnticoGlaze™ Color Selector

COLOR CHART 1032279



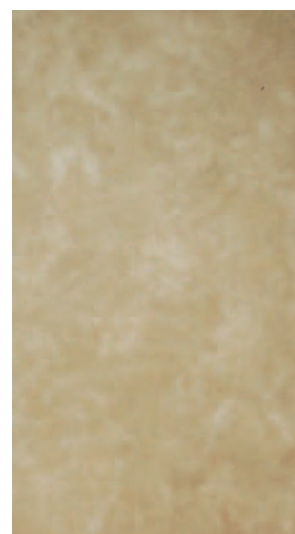
Venetian Red



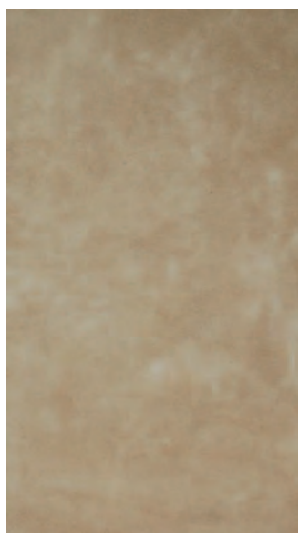
Midnight Mist



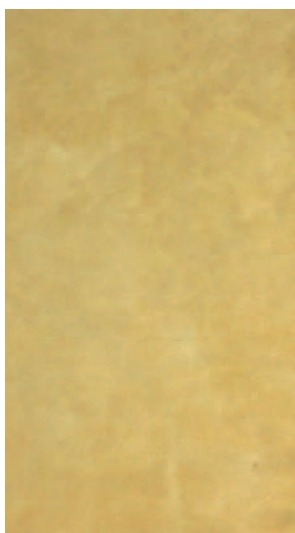
Sicilian Sand



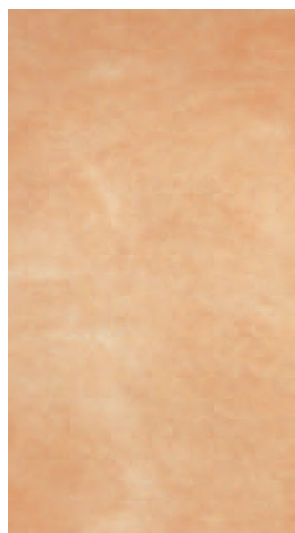
Silver Lake



Desert Earth



Sunset Gold



Coral Siena



Castillo Garden

Colors represented above are applied to a white background.

**Description**

ANTICOGLAZE is a freestyle product that produces a beautiful old-world mottled look on any stucco finish. The final appearance is greatly influenced by application technique, by the color of the AnticoGlaze itself and by the color and texture of the stucco finish to which it is applied. It is best to apply the material thinly and repeat the application, if necessary, to get more depth rather than to have to try to remove product that is applied excessively. Also, it is highly recommended that mock-ups be prepared prior to the job start to ensure the proper look is obtained.

**Features**

- Array of colors available
- Residential size container available for smaller jobs resulting in less waste
- Excellent weather resistance
- Silicone enhanced
- A perfect balance of base to pigment allowing for color highlighting but not hiding of the substrate
- Fast drying

**Application**

**A. Random Sponge Technique**

1. Dip a clean damp sponge into the ANTICOGLAZE product and apply the product to the wall in a random fashion, achieving the swirled or sponged-on look the owner desires. Color, depth and contrast are achieved by distributing the product randomly with the final appearance in mind.
2. Allow to dry overnight, protecting the surface from rain, roof run-off and condensation.

**B. Spray Technique**

1. Lightly and randomly spray the product on the wall with a low pressure sprayer.
2. Back float the product using a sponge float as needed to remove or soften the look of the color application.
3. Frequently squeeze or rinse with water any excess ANTICOGLAZE from the sponge float.
4. Allow to dry overnight, protecting the surface from rain, roof run-off and condensation.

The purpose of this color selector is to provide a representation of AnticoGlaze colors. The final color and texture of the finished product is greatly affected by the combination of the color of the AnticoGlaze and the color of the BASF Acrylic finish it is applied to. Actual color and texture selections should be made from a sample prepared by the applicator, using the same BASF products, with the same tools and techniques proposed for the actual project. Custom colors are not available.

**Note**

BASF Wall Systems is an operating unit of BASF Construction Chemicals, LLC. (herein after referred to as "BASF Wall Systems")

**Disclaimer**

This information and all further technical advice are based on BASF Wall Systems' present knowledge and experience. However, BASF assumes no liability for providing such information and advice including the extent to which such information and advice may relate to existing third party intellectual property rights, especially patent rights. In particular, BASF Wall Systems disclaims any and all CONDITIONS AND WARRANTIES, WHETHER EXPRESS OR IMPLIED, INCLUDING THE IMPLIED WARRANTIES OF FITNESS FOR A PARTICULAR PURPOSE OR MERCHANTABILITY. BASF WALL SYSTEMS SHALL NOT BE RESPONSIBLE FOR CONSEQUENTIAL, INDIRECT OR INCIDENTAL DAMAGES (INCLUDING LOSS OF PROFITS) OF ANY KIND. BASF Wall Systems reserves the right to make any changes according to technological progress or further developments. It is the customer's responsibility and obligation to carefully inspect and test any incoming goods. Performance of the product(s) described herein should be verified by testing and carried out only by qualified experts. It is the sole responsibility of the customer to carry out and arrange for any such testing. Reference to trade names used by other companies is neither a recommendation, nor an endorsement of any product and does not imply that similar products could not be used.

**BASF Wall Systems**

3550 St. Johns Bluff Road South  
Jacksonville, FL 32224-2614  
Phone 800 • 221 • 9255  
Fax 904 • 996 • 6300  
www.wallsystems.basf.com