

MASTERSEAL® 845

Sprayable, One Component Elastic Polymer Based Thin Support Liner for Surface Reinforcement and Weathering Protection of Soil and Rock

Description of Product

MASTERSEAL® 845 is an advanced technology rock support coating which has been developed especially for mines and which is easy to apply, reliable, providing continuous rock support even under difficult conditions.

Fields of Application

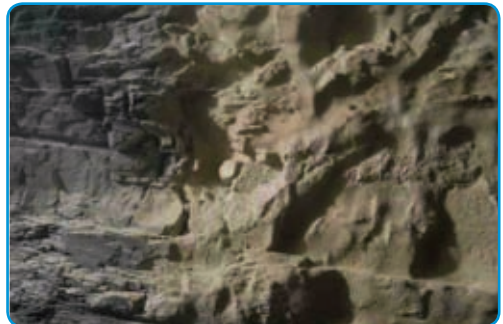
- In mines to provide surface support to the ground or the rock,
- In order to break the contact of the ground with air in mines,
- In mines it is used in order to prevent the break away of the pieces that can fall off from the ground or especially the ceiling to do so.

Advantages

- The primary purpose of **MASTERSEAL® 845** rock support coating is to provide the ground or the rock with surface support by using a 4 mm membrane and to increase stability.
- The cost of the application equipment is low and it is easy to use.
- It is applied with dry system machines with rotor by spraying with high efficiency.
- It is easy to apply only pressurized air and water is needed.
- The conveyance of the material to very long distances is possible if required. (100 - 250 meters)
- It is possible to use the same equipment with rotor for surface preparation. (water and pressurized air)
- Sprayed concrete can be applied on **MASTERSEAL® 845**.

- No material is wasted and there is no need for cleaning.
- It has a perfect adhesion and high breaking strain.
- It is not affected by the humidity of the environment.
- It solidifies rapidly.
- There are no toxic or harmful components in the product.

Its Advantages When it is Compared with



Sprayed Concrete

It has the following advantages when compared with a conventional sprayed concrete layer applied on rock:

- M2 costs are as much as a 50 mm thick sprayed concrete applied in location.
- The amount of material that must be applied per M2 is approximately 1/25 of the application with sprayed concrete, therefore it also provides time saving.
- The spare parts expenditure of the equipment is 5 to 10 times less.
- **MASTERSEAL® 845** is available in 25 kg

MASTERSEAL® 845

kraft bags. It can be carried easily and it is applied rapidly.

- The area coated as a result of the manual spraying of **MASTERSEAL® 845** is 10 to 20 times as much as sprayed concrete. Consequently the needed rock support is provided in a much shorter period of time.
- No material is wasted and there is no need for cleaning the equipment.
- Support resistance development is faster thus it becomes possible to control much larger deformations. The effect of rock structure break offs is reduced.

The advantages when compared with Steel Mats, Iksa and Bulon

- It provides a safer working environment.
- There is no need to stop the other activities in the tunnel.
- There is no risk of corrosion.
- There is no reason to fill the cavities between the bulons and steel mats with rock filled bags.
- The area coated by using **MASTERSEAL® 845** is 10 to 20 times more.
- The support is active as soon as deformation on the rock begins. (Active Support)
- It is more resistant to close range explosions with respect to steel mats.

Application Method

It must be used with **Meyco® Piccola** or a similar dry system spraying equipment with rotor.

Cleaning of the Tools

Pressurized air must be applied to the equipment for cleaning. The nozzle and the nozzle area must be thoroughly washed with water.

Packaging

25 kg polyethylene reinforced kraft bag

Storage

It must be kept in between +5°C to +40°C in its unopened original package. At most three palettes must be put on top of one another in short term storages and delivery must be made with first-in first-out system. And in long term storages palettes must not be put on top of one another.

Shelf Life

Its Shelf Life is 12 months when it is stored in its closed package under the conditions described above. Opened packages must be stored in appropriate storage conditions and must be used within a week.

Health and Safety Precautions

Work clothes, protective gloves, goggles and masks in conformity with the rules on Work and Worker Health must be used during application. The components must not be allowed to get into contact with skin and eyes due to the irritating effects of unregimented materials and in case there is a contact it must be washed with plenty of water right away and a doctor must be urgently consulted if swallowed. Food and beverages must not be allowed into application areas. It must be stored in places out of the reach of children. Please see Material Safety Data Sheets for detailed information.

MASTERSEAL® 845

Disclamier

The information on this technical document depends on our scientific and practical knowledge. **BASF Yapı Kimyasalları San. A.Ş.** is only responsible from the quality of the product. **BASF Yapı Kimyasalları San. A.Ş.** will not be liable for the consequences of usage in ways other than the written suggestions about how and where the product should be used and/or faulty usage. This technical document is valid until the publication of a new one and it voids earlier publications (09/2010)

